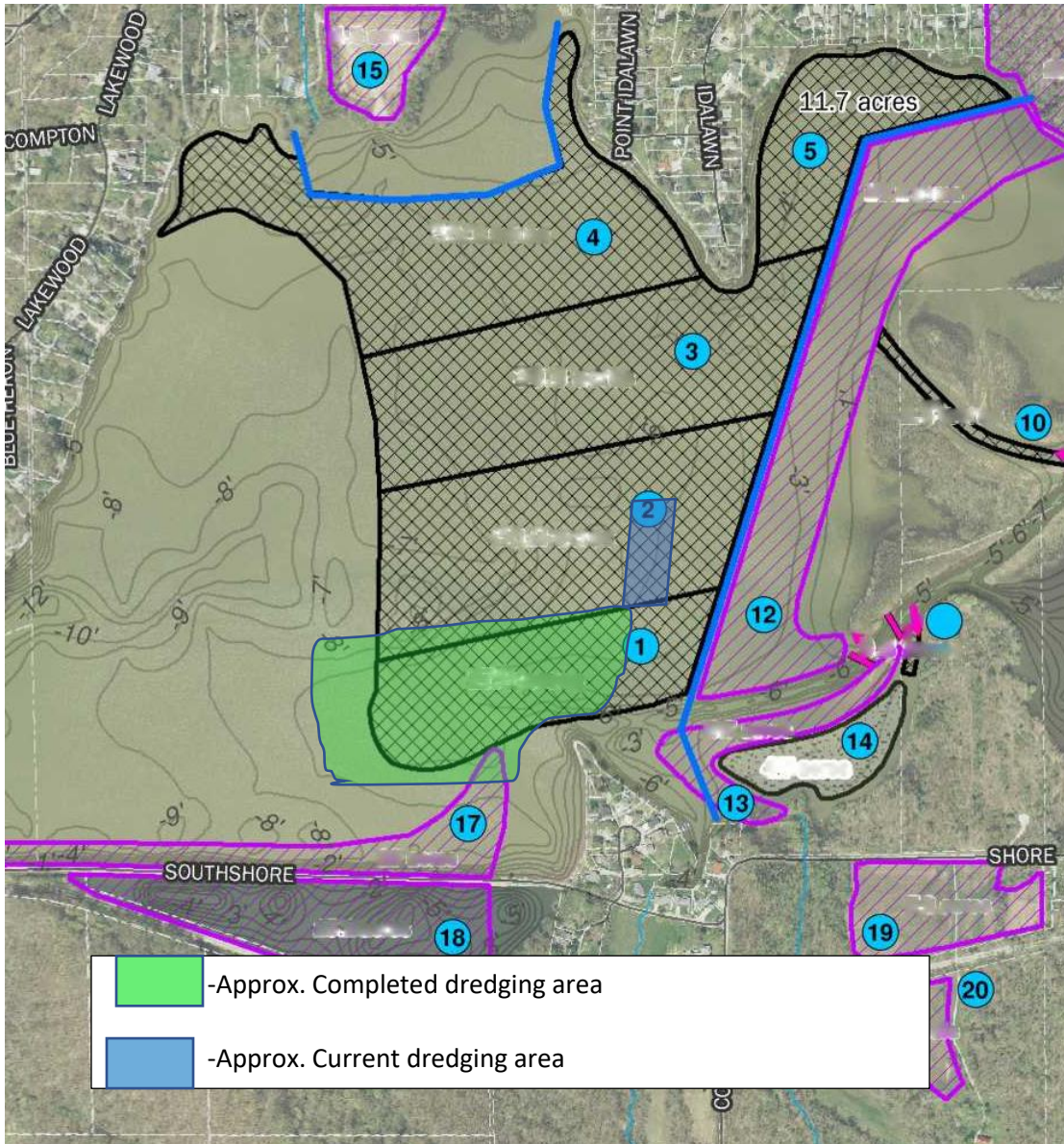


June 24th, 2023 Hydraulic Dredging Update



-Approx. Completed dredging area
 -Approx. Current dredging area

Current Dredging Contract/Project

LLCD Yardage Removed /Cost to Date

- Total Yardage removed as of 6/22/23- **83,732**
- Total Cost Basis Completion as of 5/31/23 - \$527,422.00

Maximum Contract Amount and Estimated Yardage

- Up to \$1,054,800.00
- Approximate yardage of 142,240 (58,508 remaining)
- All inclusive cost per yard- \$7.42/yd.

Shrewsberry Estimate (2018)

Project Element No. = 1
Project Element Description = s

Size (acres)	Depth of Dredging or Disposal	Dredge Volume (CYS)	Disposal Volume (CYS)	Estimated Cost
17.3	3	83,732	-	\$ 891,000

ITEM	DESCRIPTION	QTY	UNIT	PRICE	TOTAL
1	Dredging Open Water - Standard Disposal	83,732	CYS	\$ 8	\$ 669,856
2	Silt Curtain	300	LF	\$ 50	\$ 15,000
SUBTOTAL					\$ 684,856
CONTINGENCY				30%	\$ 205,456.80
TOTAL					\$ 891,000



Basin Photo Taken on May 23, 2003

2023 Private Dredging information- McCullough Dredging

-4,790 yards of sediment removed.

-49 large barge loads (80yd) and 58 small barge loads (15yd)

-16 tri-axles of rip-rap placed along shorelines

Disposal Basin Information

- Upland containment size is 120,000 yards as built, though functional volume will be less.
- Over 83,000 yards have been placed in basin.
- LLCD is currently monitoring turbidity and total Suspended solids of the basin outflow.
- Dredge material storage location will shift to Long Causeway Pond once upland basin outflow parameters are deemed unacceptable.
- The LLCD will work with permitting agencies prior to changing disposal basins so everyone is aware of the change and agrees on reasoning/parameters.

How is Removed Yardage Verified

Prior to dredging in the east bay, a bathymetric survey was taken of the dredging areas. Heartland dredging performs additional bathymetric surveys of each area dredged for submittal with pay applications. Christopher Burke Engineering compares the Pre and Post dredge surveys to verify, and/or modify, the amount of material claimed to be removed on each pay application.